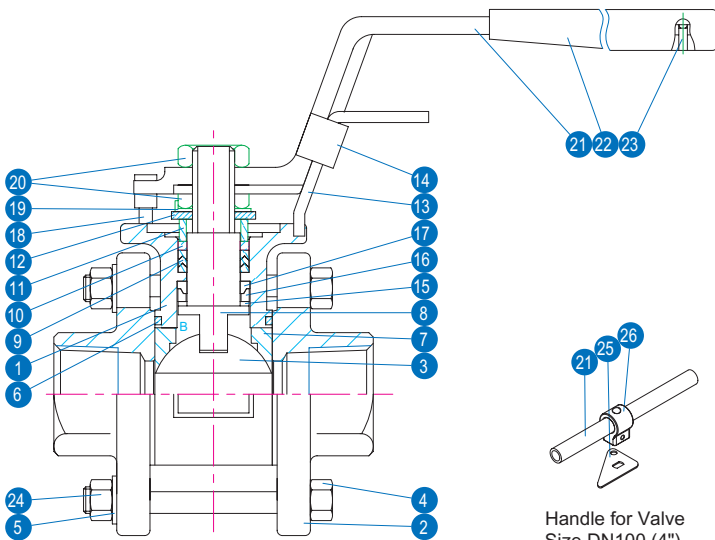




# SERIES 70S

## 3PC HIGH PERFORMANCE BALL VALVE

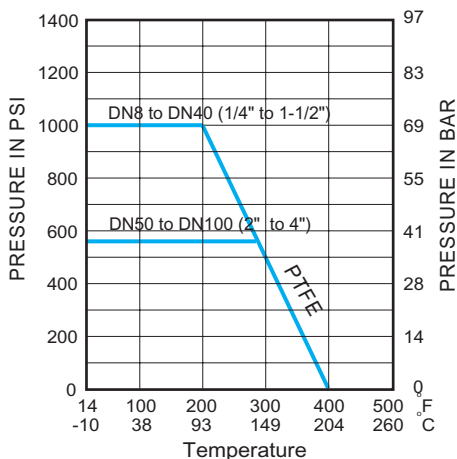


Sizes DN8 to DN80(1/4" to 3")

### FEATURES

- Patented "Sealmaster" stem arrangement.
- Double stem sealing complies with TA-LUFT requirements.
- Three-piece swing out design.
- ISO 5211 top mounting plate.
- End connections flanged, screwed, butt weld or socket weld.
- Carbon steel or stainless steel bodies.
- Size range DN8 (1/4") to DN100 (4")  
-Full bore.
- Seat material options.
- Blow-out proof stem and anti-static design.
- Tightness to EN12266-1.

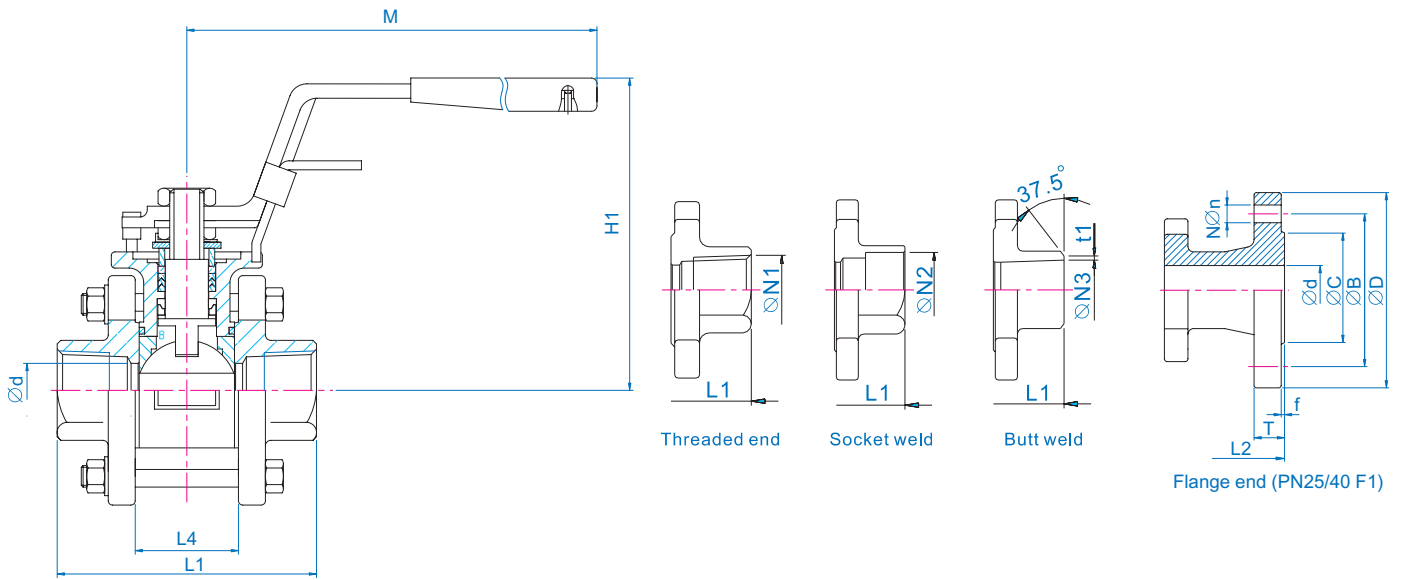
### Pressure/Temperature Chart



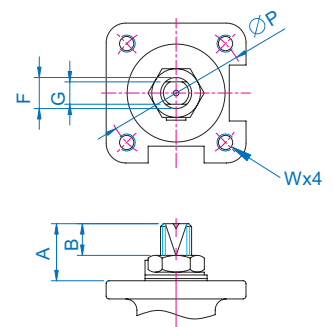
### MATERIAL OF CONSTRUCTION

| NO | Parts Name          | Material                  | Q'TY  |
|----|---------------------|---------------------------|-------|
| 1  | Body                | CF8M/WCB, 1.4408/1.0619   | 1     |
| 2  | Cap                 | CF8M/WCB, 1.4408/1.0619   | 2*    |
| 3  | Ball                | ASTM A351 GR. CF8M        | 1     |
| 4  | Bolt                | A2-70                     | 4-6   |
| 5  | Bolt Washer         | 304SS                     | 4-12  |
| 6  | Body Gasket         | PTFE                      | 2     |
| 7  | Ball Seat           | PTFE                      | 2     |
| 8  | Anti Static Stem    | A276 TYPE 316             | 1     |
| 9  | V-Ring Stem Packing | PTFE                      | 1 Set |
| 10 | Thrust Washer       | 50% S.S Powder / 50% PTFE | 1     |
| 11 | Gland               | 304SS                     | 1     |
| 12 | Belleville Washer   | 301SS                     | 2     |
| 13 | Locking Trigger     | 304SS                     | 1     |
| 14 | Fix Plate           | 304SS                     | 1     |
| 15 | Lower Stem seal     | 50% S.S Powder / 50% PTFE | 1     |
| 16 | Compress Ring       | 316SS                     | 1     |
| 17 | Upper Stem Seal     | TFM1600                   | 1     |
| 18 | Stop Bolt           | Stainless Steel           | 1     |
| 19 | Lock Saddle         | 304SS                     | 1     |
| 20 | Stem Nut            | 304SS                     | 2     |
| 21 | Handle              | CF8/SGP Zn Plating        | 1     |
| 22 | Handle Sleeve       | Vinyl                     | 1     |
| 23 | Rivet               | 304SS                     | 2     |
| 24 | Bolt Nut            | A2-70                     | 4-12  |
| 25 | Triangle Stopper    | 304SS                     | 1     |
| 26 | Handle Adapter      | CF8                       | 1     |

\* Stainless steel welded connectors are CF3M/1.4409



| Size   | DN  | A    | B    | G    | ØP  | F    | W   | Wt(kg)<br>Threaded<br>SW, BW | Wt(kg)<br>PN25/40<br>Flange |
|--------|-----|------|------|------|-----|------|-----|------------------------------|-----------------------------|
| 1/4"   | 8   | 12.5 | 6.0  | 5.0  | 36  | 8.0  | M5  | 0.44                         | N/A                         |
| 3/8"   | 10  | 12.5 | 6.0  | 5.0  | 36  | 8.0  | M5  | 0.44                         | N/A                         |
| 1/2"   | 15  | 19.8 | 12.5 | 6.3  | 42  | 9.7  | M5  | 0.44                         | 2.24                        |
| 3/4"   | 20  | 20.0 | 12.5 | 6.3  | 42  | 9.7  | M5  | 0.95                         | 3.04                        |
| 1"     | 25  | 21.0 | 13.7 | 8.0  | 50  | 11.2 | M6  | 1.40                         | 3.90                        |
| 1-1/4" | 32  | 21.4 | 13.2 | 8.0  | 50  | 11.2 | M6  | 1.90                         | 6.25                        |
| 1-1/2" | 40  | 24.6 | 13.9 | 9.5  | 70  | 16.0 | M8  | 3.08                         | 7.15                        |
| 2"     | 50  | 25.1 | 13.9 | 9.5  | 70  | 16.0 | M8  | 4.70                         | 10.15                       |
| 2-1/2" | 65  | 41.6 | 26.1 | 15.0 | 102 | 19.1 | M10 | 8.90                         | 16.62                       |
| 3"     | 80  | 42.0 | 25.4 | 15.0 | 102 | 19.1 | M10 | 14.10                        | 23.80                       |
| 4"     | 100 | 47.8 | 29.2 | 17.0 | 102 | 28.6 | M10 | 22.00                        | 35.60                       |



| Size   | DN  | Ød   | M   | H1    | L4    | L1     | L2  | N   | t1   | T   | f   | Øn  | ØD  | ØB  | ØC  | ØN1  | ØN2   | ØN3   |
|--------|-----|------|-----|-------|-------|--------|-----|-----|------|-----|-----|-----|-----|-----|-----|------|-------|-------|
| 1/4"   | 8   | 11.6 | 135 | 65.5  | 21.1  | 65.00  | N/A | N/A | 0.80 | N/A | N/A | N/A | N/A | N/A | N/A | NPT  | 14.2  | 11.6  |
| 3/8"   | 10  | 12.7 | 135 | 66.0  | 21.2  | 65.00  | N/A | N/A | 0.65 | N/A | N/A | N/A | N/A | N/A | N/A | or   | 17.5  | 12.8  |
| 1/2"   | 15  | 15.0 | 135 | 83.0  | 26.5  | 72.10  | 130 | 4   | 0.80 | 16  | 2   | 14  | 95  | 65  | 45  | PT   | 21.7  | 15.8  |
| 3/4"   | 20  | 20.0 | 135 | 86.0  | 33.2  | 85.00  | 150 | 4   | 1.00 | 18  | 2   | 14  | 105 | 75  | 58  | or   | 27.1  | 20.9  |
| 1"     | 25  | 25.0 | 165 | 96.0  | 37.7  | 91.96  | 160 | 4   | 1.60 | 18  | 2   | 14  | 115 | 85  | 68  | PF   | 33.8  | 26.6  |
| 1-1/4" | 32  | 32.0 | 165 | 102.0 | 46.8  | 110.00 | 180 | 4   | 1.60 | 18  | 2   | 18  | 140 | 100 | 78  | or   | 42.6  | 35.0  |
| 1-1/2" | 40  | 38.0 | 200 | 115.0 | 58.0  | 123.00 | 200 | 4   | 1.65 | 18  | 3   | 18  | 150 | 110 | 88  | DIN  | 48.6  | 40.9  |
| 2"     | 50  | 50.8 | 200 | 124.0 | 69.6  | 142.00 | 230 | 4   | 1.60 | 20  | 3   | 18  | 165 | 125 | 102 | 2999 | 61.1  | 52.5  |
| 2-1/2" | 65  | 65.0 | 250 | 160.0 | 86.5  | 174.00 | 290 | 8   | 2.00 | 22  | 3   | 18  | 185 | 145 | 122 |      | 77.1  | 62.7  |
| 3"     | 80  | 76.0 | 250 | 170.0 | 102.6 | 193.00 | 310 | 8   | 2.00 | 24  | 3   | 18  | 200 | 160 | 138 |      | 90.2  | 78.0  |
| 4"     | 100 | 97.4 | 500 | 182.0 | 125.4 | 221.40 | 350 | 8   | 2.00 | 24  | 3   | 22  | 235 | 190 | 162 |      | 115.1 | 105.5 |

N/A = Not Available

## ORDERING INFORMATION

| 70S | B | 1 | 1 | R | G | C | 2 | 70 STANDARD        |               |                              |                            |            |                 |                               |
|-----|---|---|---|---|---|---|---|--------------------|---------------|------------------------------|----------------------------|------------|-----------------|-------------------------------|
|     |   |   |   |   |   |   |   | END CAP TYPE       | PORT TYPE     | BODY/END CAP MATERIAL        | SEAT MATERIAL              | SIZE       | PRESSURE        | HANDLE TYPE                   |
|     | B | 1 | 1 | R | G | C | 1 | BUTT WELD          | 1   FULL PORT | 1   316 CF8M<br>1.4408 SCS14 | T   PTFE                   | A   1/4"   | C   PN50/720cwp | 1   STANDARD HANDLE<br>W/Lock |
|     | F |   |   |   |   | H |   | FLANGE             |               | 3   ALLOY-20                 | R   RPTFE                  | B   3/8"   |                 | 2   T - HANDLE                |
|     | L |   |   |   |   |   |   | EXTENDED BUTT WELD |               | 4   WCB GS-C25<br>1.0619     | N   50% S/S Filled PTFE    | C   1/2"   |                 | 3   BARE SHAFT                |
|     | S |   |   |   |   |   |   | SOCKET WELD        |               | 5   316L CF3M                | 4   25% CARBON<br>75% PTFE | D   3/4"   |                 |                               |
|     | N |   |   |   |   |   |   | THREADED END(NPT)  |               |                              | U   UHMWPE                 | E   1"     |                 |                               |
|     | P |   |   |   |   |   |   | THREADED END(PF)   |               |                              | M   MG1241                 | F   1-1/4" |                 |                               |
|     | H |   |   |   |   |   |   | THREADED END(PT)   |               |                              | O   OTHER                  | G   1-1/2" |                 |                               |
|     |   |   |   |   |   |   |   |                    |               |                              |                            | H   2"     |                 |                               |
|     |   |   |   |   |   |   |   |                    |               |                              |                            | J   2-1/2" |                 |                               |
|     |   |   |   |   |   |   |   |                    |               |                              |                            | K   3"     |                 |                               |
|     |   |   |   |   |   |   |   |                    |               |                              |                            | L   4"     |                 |                               |

ALL VALVES 100% AIR TESTED UNDER WATER AT 100 PSI, OPEN & CLOSE POSITION